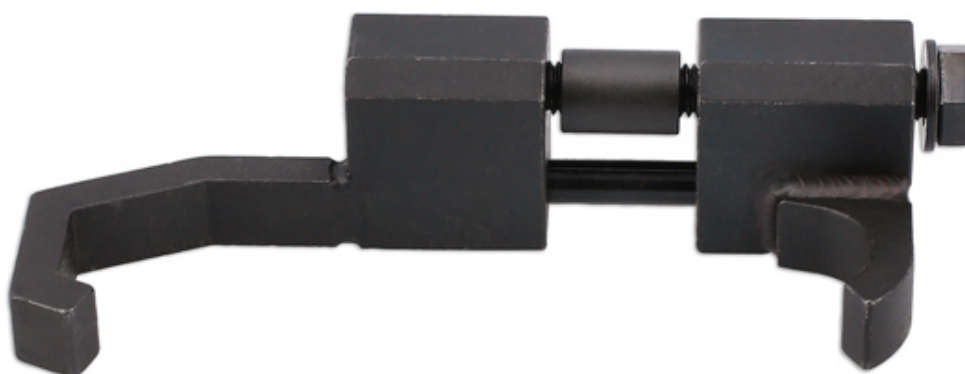


Auto Tensioner Compressor Tool - for Hyundai, Kia

The Laser tensioner compressor tool has been developed to compress the auto adjuster found on the hybrid electric vehicles in the Hyundai and Kia ranges. The tensioner works on the large heavy duty multi-v belt that connects the high voltage start generator unit to the engine and as such has a powerful spring that must be compressed before belt removal and fitting. The tensioner found on the 1.6L GHEV engines (Hyundai) must not be over compressed so the Laser tool is supplied with a compression control tube that should be used to prevent over compression on these engines.



Additional Information

- Hyundai applications include: Ioniq 1.6 GDi Hybrid (2016 - 2022) and Kona 1.6 GDi Hybrid (2019 - 2022)
- Kia applications include: Niro 1.6 GDi Plug-in (2017 - 2022), Optima 2.0lt GDi Plug-in (2016 to 2020) and XCeed 1.6 GDi plug-in (2020 - 2022)
- Supplied with compression control tube for 1.6L applications.
- Equivalent to OEM 09244-G21000 and 9252-2E100.
- Instructions supplied.

<http://lasertools.co.uk/product/8422>

